

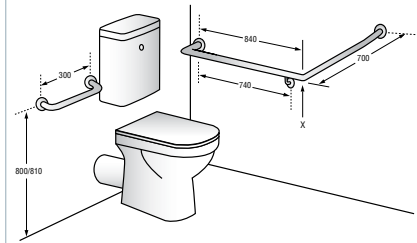
DISABLED BATHROOM ACCESSORIES

FLUSH MOUNT / ON WALL CISTERN

32mm Satin Stainless Steel
Sloping arm at 30 Degrees from Horizontal
Includes 300mm Rail
Bend 'X' 100-150mm forward of Pan Rim

CODE FLR 101 Left Hand (As Shown)

CODE FLR 102 Right Hand

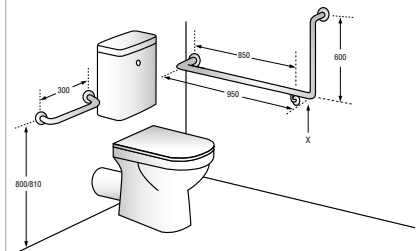


FLUSH MOUNT / ON WALL CISTERN

32mm Satin Stainless Steel 90 Degrees
Includes 300mm Rail
Bend 'X' 200-250mm forward of Pan Rim

CODE FLR 103 Left Hand (As Shown)

CODE FLR 104 Right Hand

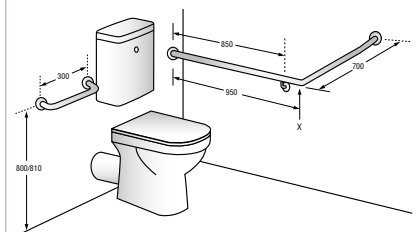


FLUSH MOUNT / ON WALL CISTERN

32mm Satin Stainless Steel
Sloping arm at 30 Degrees from Horizontal
Includes 300mm Rail
Bend 'X' 100-150mm forward of Pan Rim

CODE FLR 105 Left Hand (As Shown)

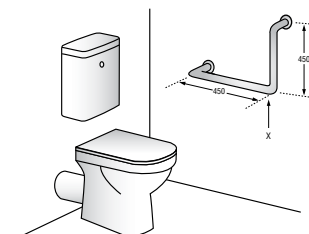
CODE FLR 106 Right Hand



GRAB RAIL AMBULANT

32mm Satin Stainless Steel
Size 450mm x 450mm 90°
Left or Right Hand

CODE FLR 112 Suits Left or Right Hand



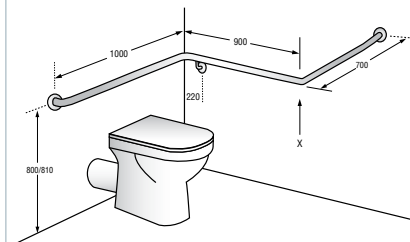
FULLY COMPLIANT WITH BUILDING CODE AUSTRALIA AS 1428.1-2001

DISABLED BATHROOM ACCESSORIES

GRAB RAIL SATIN STAINLESS STEEL

32mm Disabled
Wrap Around WC 45 Degrees
Left or Right Hand

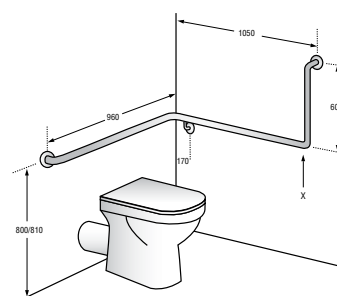
CODE FLR 113 Left Hand (As Shown)
CODE FLR 114 Right Hand



GRAB RAIL SATIN STAINLESS STEEL

32mm Disabled
Wrap Around WC 90 Degrees
Left or Right Hand

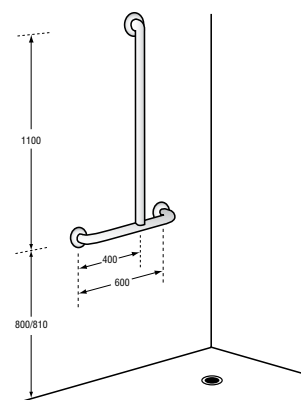
CODE FLR 115 Left Hand (As Shown)
CODE FLR 116 Right Hand



SHOWER GRAB RAIL

Size 600mm x 1000mm offset "T"
32mm Satin Stainless Steel

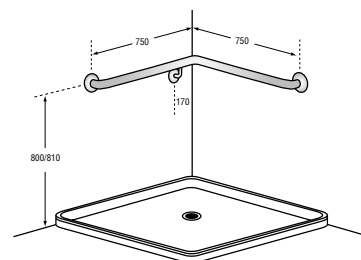
CODE FLR 107 As Shown
CODE FLR 108 Opposite Hand



SHOWER GRAB RAIL

32mm Satin Stainless Steel
Wrap Around
Size 750mm x 750mm 90°

CODE FLR 109 As Shown
CODE FLR 110 Opposite Hand



FULLY COMPLIANT WITH BUILDING CODE AUSTRALIA AS 1428.1-2001

DISABLED BATHROOM ACCESSORIES

FOLDING SHOWER SEAT

25mm diameter, Tube 304 Stainless Steel
High pressure plastic laminate

DIMENSIONS 457mm W x 394mm D
CODE FLR 990-19



DISABLED FOLDING SHOWER SEAT WITH LEGS

Legs/frame #304 Satin Finish 25mm Square Stainless Steel Tubing
#316 Stainless Steel Screws, Nylon interface washers and Nyloc nuts hold frame together

Nylon feet and wall mount inserts protect from water ingress

Seat 13mm Thick Compact Laminate with Bevelled Arrises and 3 off 12mm W x 500mm L self drainage slots, providing hygienic, high strength durability

DIMENSIONS 960mm W x 380mm D x 476mm H
CODE FLR 995



FOLD AWAY DISABLED SHOWER SEAT

DIMENSIONS 960mm W x 400mm D
BRACKETS 25mm x 25mm SQ Stainless Steel section

Aluminium slatted top
Powder coated white

CODE FLR 991



FOLD AWAY SHOWER SEAT

DIMENSIONS 355mm W x 315mm D
BRACKETS 25mm x 25mm SQ Stainless Steel section

Aluminium slatted top
Powder coated white

CODE FLR 992



FULLY COMPLIANT WITH BUILDING CODE AUSTRALIA AS 1428.1-2001